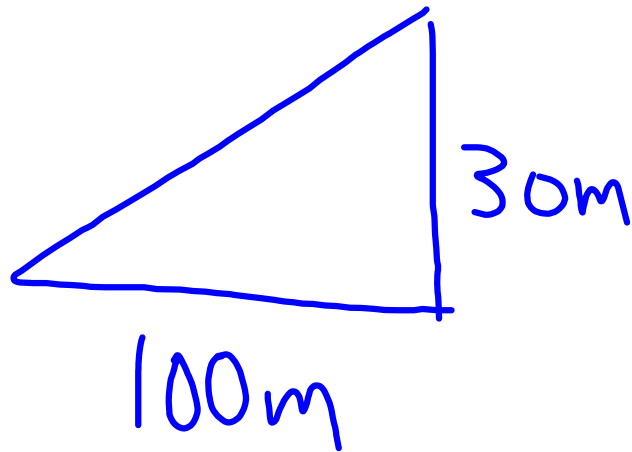
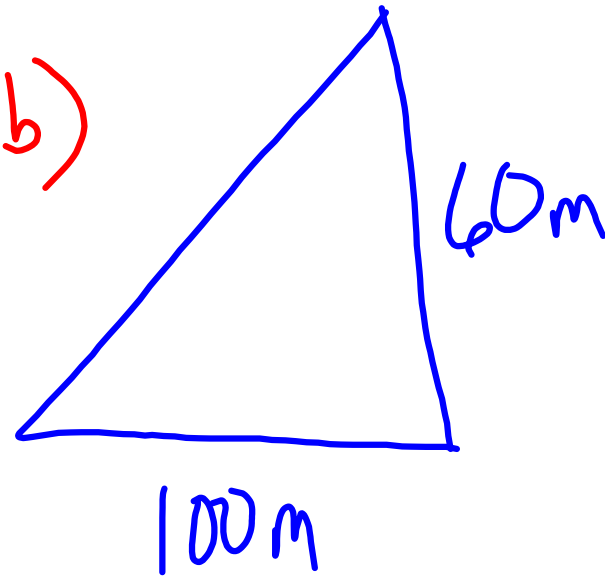


Which is more
Difficult to Climb?

a)

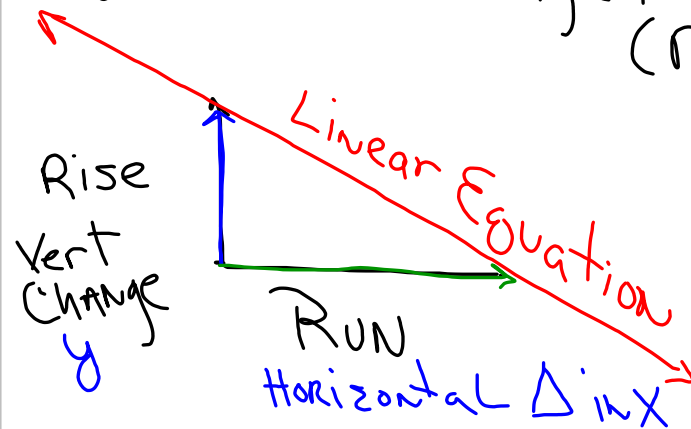


b)



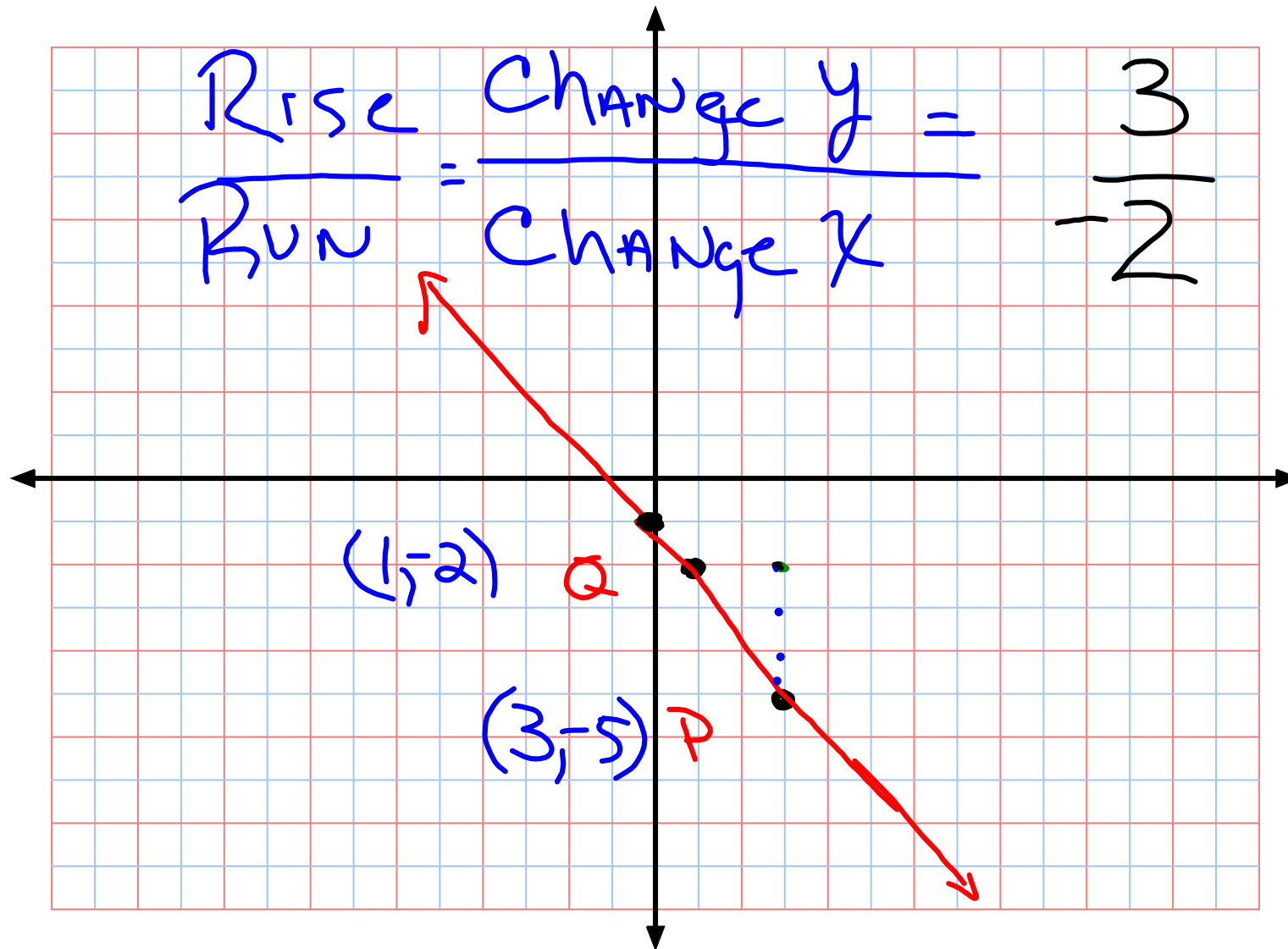
8-4 Slope and Y Intercept

Slope - of a Line is
the change in y (Rise)
over the change in x
(Run)



Slope formula (Ratio)
(Fraction)

$$\text{Slope} = \frac{\text{the difference in } y}{\text{the difference in } x}$$



Slope Intercept Form

a Linear Equation
in the form of

$$y = mx + b$$

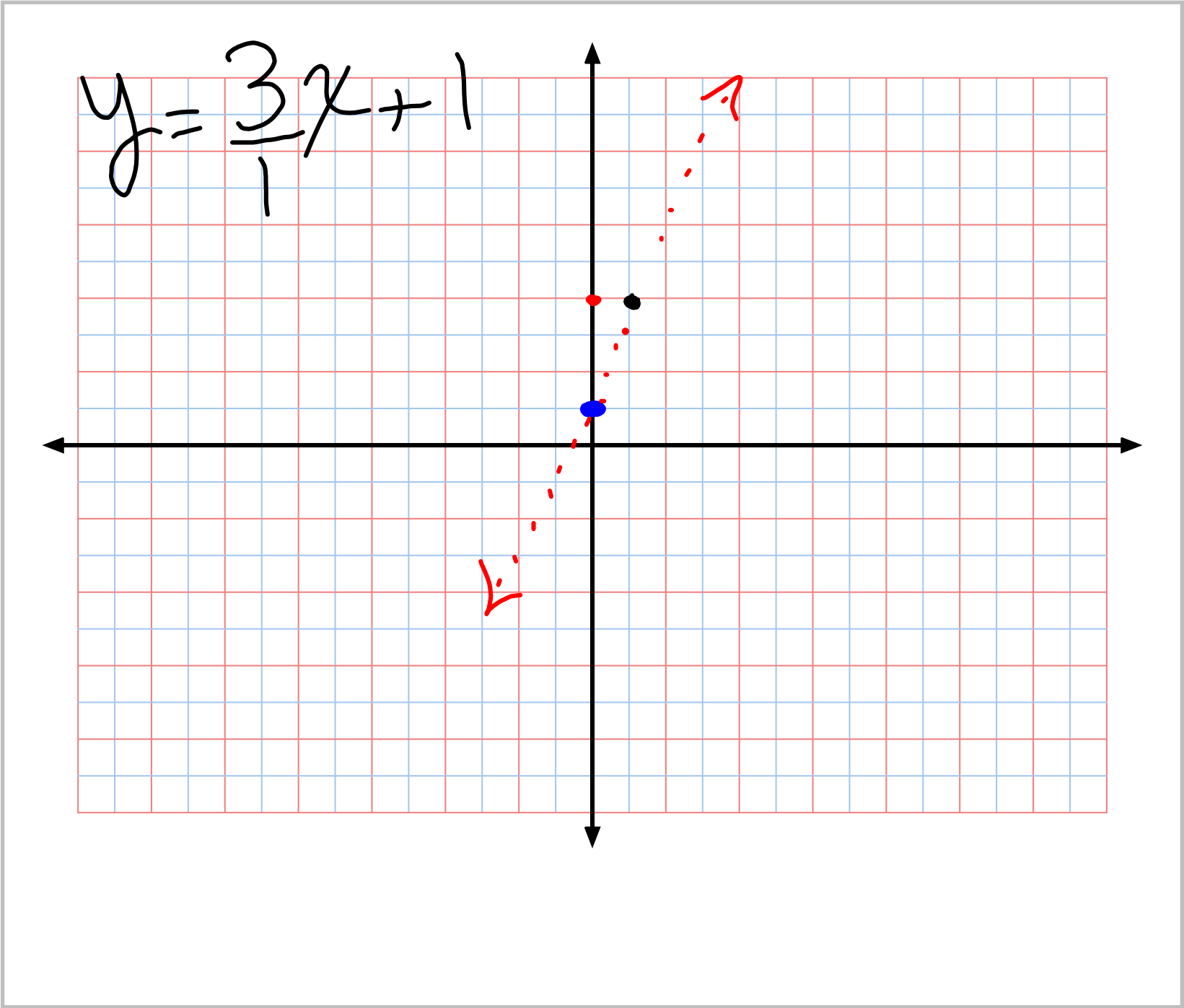
where the slope is
 m and the y
intercept is b .

$$y = 3x + 1$$

slope

3

y-Intercept



Title: XY axis - medium (5 of 6)

$$3x + y = 3$$

$$3x - 3x + y = 3 - 3x$$

$$y = 3 - \frac{3x}{1}$$

$$y = -\frac{5}{6}x + 4$$

↑
slope

↑
y-Intercept