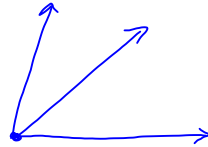


Chapter 9-2 11-29

SWBAT: INVESTIGATE  
angle measures and  
relationships.

## Adjacent Angles

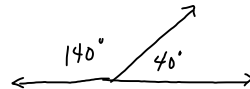


SHARE the vertex and  
SIDE. (next to each  
other)

2 types of Adjacent  
Angles

1) Supplementary Angle -

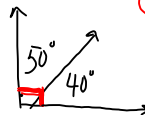
2 angles whose sum equal  
 $180^\circ$ . (STRAIGHT ANGLE)



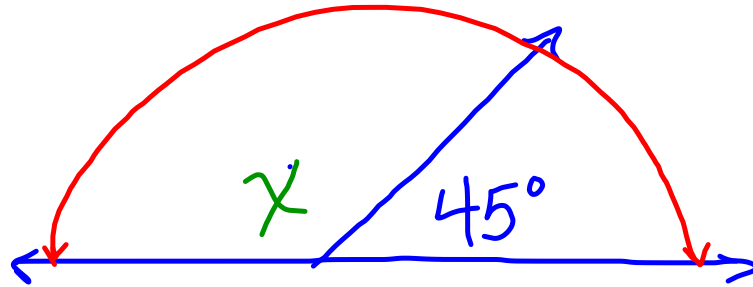
$$140 + 40 = 180^\circ$$

Complementary Angles -

2 angles whose sum =  
(Right)  $90^\circ$

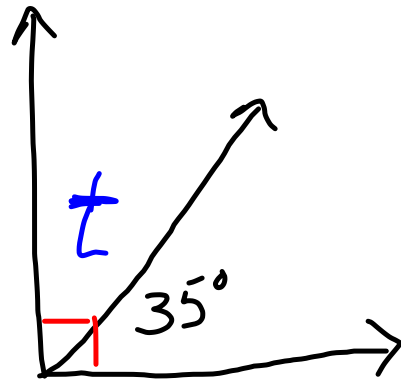


$$50 + 40 = 90^\circ$$



$$180^\circ - 45^\circ = \chi$$

$$135^\circ = \chi$$

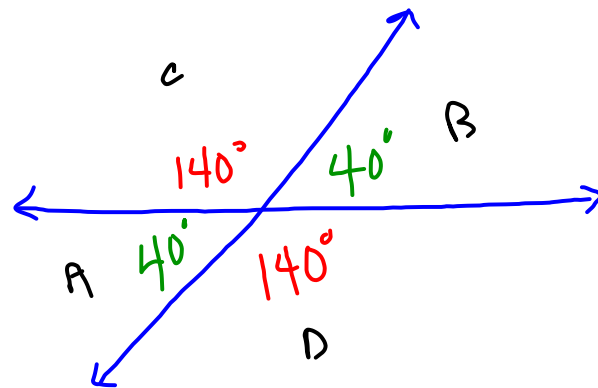


$$90^\circ - 35^\circ = t$$

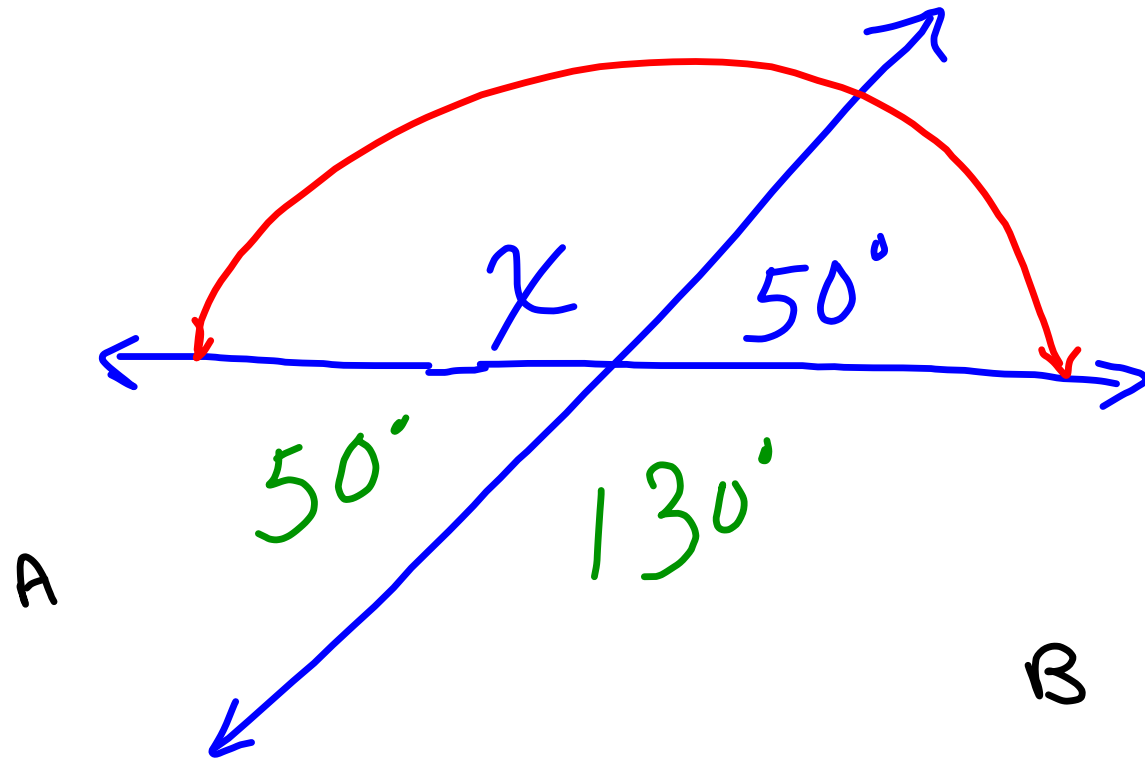
$$55^\circ = t$$

# Vertical Angles

Created by intersecting lines. They are opposite and have the same measure.



$\angle A + \angle B$  are vertical  $\angle$ 's  
 $\angle C + \angle D$  are vertical  $\angle$ 's



$$180^\circ - 50^\circ = X$$

$$130^\circ = X$$

Perpendicular

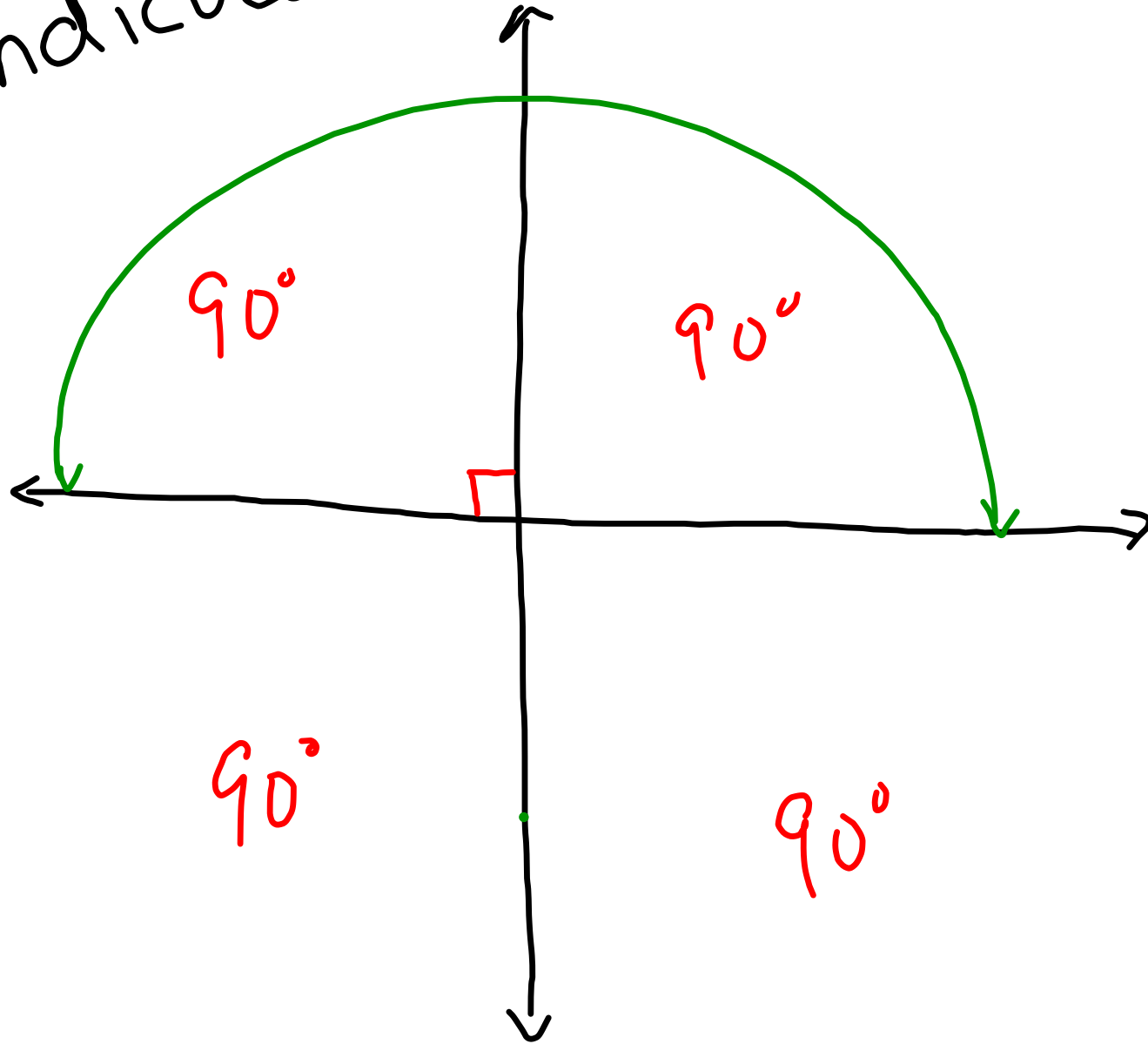
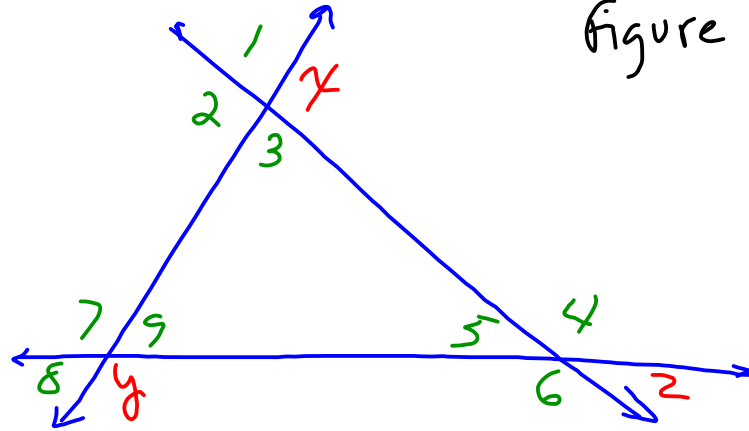


Figure xyz



The numbers are the L's  
Letters are Intersecting Pts.

